



PANTHÉON-ASSAS  
UNIVERSITÉ  
PARIS

■  
Direction des affaires  
internationales



# WELCOME GUIDE FOR INTERNATIONAL STUDENTS



## TABLE OF CONTENTS

<b>Welcome.</b>	<b>3</b>	<b>Campus life</b>	<b>14</b>
The University	3	Student card	14
Assas in a few figures	4	Digital services	15
International	4	E-mail address and the Digital Working	15
Exchange Programmes	4	Environment (DWE)	15
Double degrees	4	Dining facilities	15
Programmes taught in French specifically designed for international students	5	University library	15
Programmes taught entirely in English	5	Borrowing	15
International campuses	5	Photocopying, etc.	16
University calendar	6	Help with documentary research	16
Public holidays	6	Wheelchair access	16
		Job Guidance Service (CIO-BAIP)	16
		Student associations	16
<b>Coming to study in Paris</b>	<b>7</b>	Sport	16
Your induction	7	Health and well-being	17
Administrative procedures	8	Disability	17
Registration	8	#RéagirAssas	17
Course registration	9	Assas Environment	17
Tuition fees	9		
Visas and residence permits	9	<b>Addresses of the centres</b>	
Working in France during your studies	10	<b>of Paris-Panthéon-Assas University</b>	<b>18</b>
Scholarships	10	Panthéon Centre	18
Health insurance cover	10	Assas Centre	18
EHIC: European Health Insurance Card	11	Vaugirard Centre 1	18
Opening a bank account	11	Guy de la Brosse Centre	18
Acc&ss network Paris Île-de-France and the		Melun Centre	18
Welcome Desk Paris	11		
		<b>Your contacts</b>	<b>19</b>
<b>Living in Paris</b>	<b>12</b>		
Learning French	12	<b>Check List</b>	<b>19</b>
French as a Foreign Language (FLE) centres	12	Before arriving in France	19
Accommodation	12	When you arrive in Paris	19
«Finding accommodation in Paris» guide	12	While you are studying in France	19
Public transport	13		
Velib'Métropole	13	<b>Useful information</b>	<b>19</b>
Cultural scene	13	Web sites	19
		Emergency numbers	19



# WELCOME TO PARIS-PANTHÉON-ASSAS UNIVERSITY

## In a few figures

- 23 000 students
- 3 000 students from abroad
- 300 international student exchange and cooperation agreements
- 5 disciplinary areas Law, Political Science, Economics, Management, Information and Communication
- 123 national degrees (Bachelors, Masters, PhDs)
- 69 university degrees (DU)
- 9 double and triple degrees
- 5 PhD schools, 1 000 PhD students
- 3 campuses abroad: Dubai, Mauritius and Singapore.
- 1 digital campus: Agor@ssas
- 360 student associations

## THE UNIVERSITY

Located in the heart of Paris, in the Latin Quarter, Paris-Panthéon-Assas University is the first and oldest law university in France. It was founded in the 13th century. Its reputation for excellence in teaching and research is recognised throughout France and abroad.

Committed to first-class education, it has 23 000 students, including 3 000 international students studying law, political science, economics, management and information and communication sciences.

Its lecturers are universally recognised in their fields of expertise in France and abroad.

Paris-Panthéon-Assas University aims to develop exchanges with its European and international partners and shares the same ambition: that of offering education and developing research programmes of the highest quality.





## INTERNATIONAL

Paris-Panthéon-Assas University attaches great importance to its partnerships and international relations.

The university has 300 cooperation agreements with 200 partner universities in more than 50 countries worldwide.

The job of the University's International Relations Department is to develop its international standing through cooperation agreements and student exchange programmes. In addition, it assists international students who are on individual and coached mobility programmes (excluding exchange programmes).

### Bienvenue en France label



Paris-Panthéon-Assas University has been awarded the Bienvenue en France label with two stars. This label is given to institutions which offer facilities that ensure the successful integration of international students.

The score obtained by Paris-Panthéon-Assas University (two out of three stars) attests to the quality of the welcome given to international students.

### 4EU+ Alliance



EUROPEAN  
UNIVERSITY  
ALLIANCE

Paris-Panthéon-Assas University is affiliated to the European University Alliance 4EU+. Panthéon-Assas University is renowned for its excellence in social sciences, and law in particular. It therefore complements the profile of the other members and participates in strengthening the multidisciplinary nature of 4EU+.

For Paris-Panthéon-Assas University, this will also be an opportunity to further invest in multi-disciplinary research within a European

academic system, particularly on issues such as sustainable development and artificial intelligence.

### Exchange Programmes

Paris-Panthéon-Assas University offers a large number of exchanges with universities in Europe and around the world. Most programmes are organised as part of the Erasmus+ programme. There are a total of 850 students on mobility programmes every year.

A wide range of degree and Master's level courses as well as a very wide range of programmes are offered to students coming from partner universities. In addition, exchange programmes students can study for two special certificates: the «Certificate of French and International Law» and the «Certificate of Specialised French».

### Courses in English

Students who are on exchange programmes may, if they wish, take courses in Law and Economics which are taught in English.

For more information, please see the [list of courses in English by discipline on the website](#).

## Double degrees

Paris-Panthéon-Assas University offers 9 double Law degrees (French and partner country Law) in partnership with universities in the UK, Germany, Spain, Ireland, Switzerland and Italy.

Paris-Panthéon-Assas University has also created a Master's degree in European Law in partnership with 7 other universities in the European Law School network. Students undertake a 3 year course at their home university, complete their fourth year at the Humboldt University in Berlin (Germany) before finishing their course at one of the 5 other partner universities: King's College London (United-Kingdom), The Sapienza University of Rome (Italy), the University of Amsterdam (the Netherlands), the Catholic University of Portugal (Lisbon, Portugal), or the National and Kapodistrian University of Athens (Greece) and the Autonomous University Madrid (Spain).

## Programmes taught in French specifically designed for international students

- **Master-level university degrees (DSU) : International Relations Department**

The DSU is a Master's level law course. It is an excellent preparation for students with a B2 level of French who plan to enrol in a national Master's course the following year.

There are 6 DSU courses:

- Business and corporate law
- International private law
- International public law
- Administrative law
- Civil law
- European Union law
- **Master's degree in French and European law (C2 level in French required): Master's degree course**
- **LL.M. in French, European and international law (C1 level in French required): Institute of comparative Law**

## Programmes taught entirely in English

- **LL.M. in European Law: Institute of comparative Law**
- **LL.M. in International Business Law: International Law School**
- **LL.M. AWArDS: Assas world Arbitration and disputes settlement: Institute of comparative Law**
- **LL.M. Public Law and Democracy: Michel Villey Institute**
- **Master's Degree in International Hu-**

man Resource Management: CIFFOP (Interdisciplinary Centre for Personnel Function Training)

- **Summer School "Certificate in Private law and Economics" (Yale/Assas Université/Essec Paris): International Relations Department**
- **Summer School in International Law run by the Institute of Higher International Studies: IHEI**

## International campuses

In 2011, Paris-Panthéon-Assas University launched an ambitious internationalisation programme, involving in particular the creation of several «Assas International» certified campuses around the world: Dubai, Mauritius, Paris and Singapore.

Assas International's mission is to provide professional training for future financial and legal directors, managers of holding companies or major companies or their advisers.

The School offers several programmes.

The degrees awarded by the university are:

- **LL.M. In International Business Law in Dubai, Paris, Mauritius and Singapore.**
- **Bachelor of Law (LL.B.) in Dubai and Mauritius.**
- **Bachelor in Economics and Finance in Mauritius.**
- **Bachelor in Law and Management (from the start of the academic year 2024) in Mauritius.**
- **A so-called «executive» programme of on-demand seminars, aimed at developing and enhancing the skills of lawyers, managers and in-house advisers in specific legal areas relating to international business in Singapore.**
- **A short programme in March and a summer course in July in Singapore.**

All the programmes are taught by academics from Paris-Panthéon-Assas University and by legal professionals from Europe, Asia, Africa and the Indo-Pacific. The programmes are all based on case studies and an in-depth study of key topics from a multi and cross-disciplinary perspective.

For more information, please visit: <https://assas-international.com/>



## UNIVERSITY CALENDAR

The academic year is split into 2 semesters each lasting 12 weeks.

There are two examination sessions in January and May/June, both preceded by a week of revision.

There are several holiday periods at Christmas (2 weeks) and in spring (2 weeks).

### Public holidays

- 1<sup>st</sup> November: All Saints' Holiday
- 11 November: Armistice 1918
- 25 December: Christmas
- 1<sup>st</sup> January: New Year's Day
- Early April : Easter Monday
- Mid-May: Ascension
- 1<sup>st</sup> May: Labour day
- 8 May : Armistice 1945
- End of May : Spring Bank Holiday
- 14 July: Bastille Day
- 15 August: Assumption

For more information, please check the academic year calendar



## COMING TO STUDY IN PARIS

### YOUR INDUCTION

The events and festivities organised by the university aim to help new students adapt to studying in France and settle into life in Paris or in Melun.

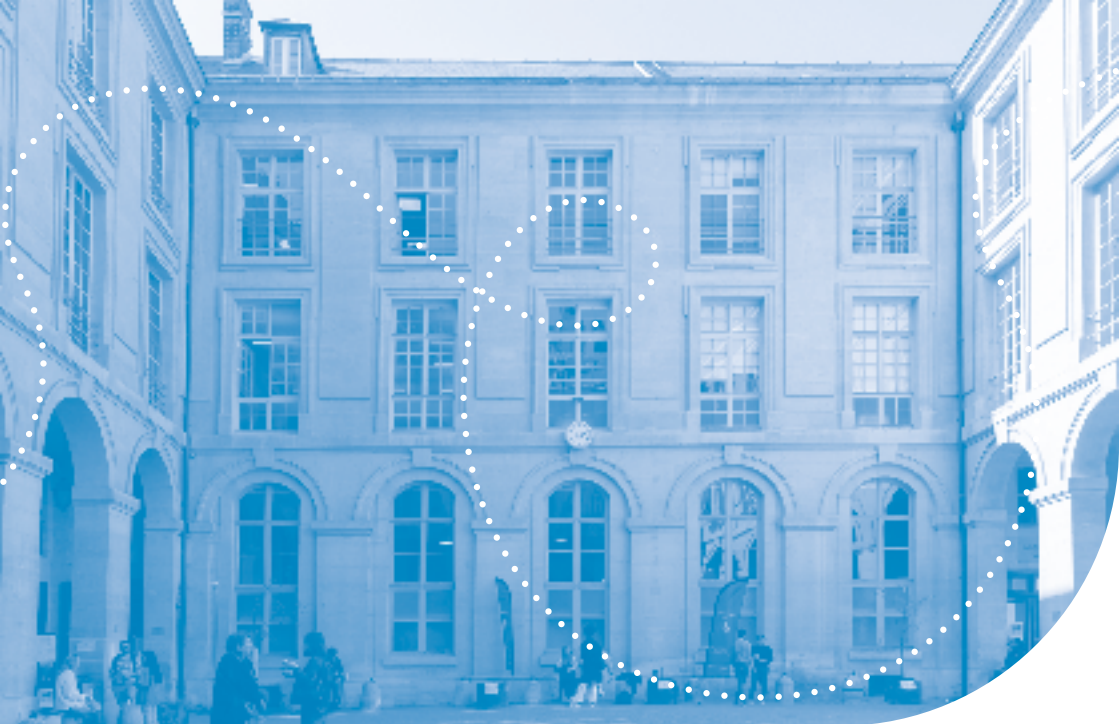
Each year, international students who are arriving for the first time are welcomed at a Freshers week which is organised by the International Relations Department.

This Freshers week takes the following form:

- Induction and administrative information meetings for welcoming and guiding students.
- Educational welcome meetings run by the lecturers in charge to explain how the French university system works and the content of the courses.
- Introductory courses in French Law and methodology for all law and political science students.

- Welcome and induction events: university vice-chancellor's breakfast, general information meeting, sports and cultural day, open days, formal opening ceremony, on the main campuses: Assas, Vaugirard and Melun.
- A presentation and tour of the university library.

This whole point of the programme is to provide students with the best possible induction. Whether they are studying for a semester or a year at Paris-Panthéon-Assas University, on an exchange programme, double degree or individual mobility programme, international students have the opportunity to meet and get to know the teaching staff within the university.



## ADMINISTRATIVE PROCEDURES

### REGISTRATION

After admission to Paris-Panthéon-Assas University comes the registration which takes place in several stages:

#### Student life and campus tax (CVEC)

Every student whether on an initial study course or on an individual mobility programme at a higher education establishment must pay the CVEC in order to be registered.

The purpose of the CVEC is to finance access to health care (university health centres, Student Health Centres (ERS), etc.), social support, student association projects, develop sports and cultural life, and improve student induction.

The amount of the CVEC is 5 euros for a year and can be paid on the website. Some students, depending on their status, do not have to pay the CVEC.

Here's how to obtain a certificate:

1. Create an account on [MesServices.Etudiant.gouv.fr](https://mes-services.etudiant.gouv.fr)

2. Pay your CVEC
3. Download your certificate

You will need to provide your certificate when you register. If you are exempted, you must follow the same procedure.

For more information, please visit the [CVEC](https://www.cvec.fr) website.

#### Administrative registration

The payment of the registration fee allows you to obtain your student card, your certificate of registration and to access the services of the university, and in particular the documentary resources and online library.

More information on [Administrative registration](#)

#### Course registration

Course registration allows you to register for courses: compulsory and optional subjects, lectures (CM), and to make your choices regarding optional subjects and tutorials (TD).



## Tutorials (TD)

This registration involves choosing, as part of a second stage and in line with a published calendar, the group timetables of tutorials which are associated with the subjects you have chosen. More information on [Course Registration](#)

## Tuition fees

Students from outside the European Union, the European Economic Area, Switzerland, Monaco, Andorra or the province of Quebec are generally subject to the differing registration fees. More information on [Tuition fees](#)

## Visas and residence permits

The very first visa application must be registered on the internet, usually between July and September, via the [France-Visas](#) portal: this includes scanning, submitting supporting documents and paying the visa fee online. Failing that, applications can be sent to the French consulate or embassy.

By the end of 2023, all consulates will be connected to France-Visas.

**The visa application must be made no earlier than 3 months before and no later than 15 days before the date of departure.**

The visa application fee is 99 euros, or 50 euros if the student has applied through Campus France. The visa fee is free if the student has a scholarship.

Long-stay visas are generally issued within 8 to 10 days, but by law, consular services have a maximum of 2 months to respond to a visa application.

**Important: The visa must be approved within 3 months following arrival in France on the [ANEF website](#)**

To renew their residence permit, foreign students in France must use the ANEF's paperless procedure.

**Students must apply for their long-stay visa or residence permit to be renewed at the ear-**

**liest 4 months and at the latest 2 months before the end of the permit that they currently hold.**

The student must prove that he/she continues to meet the conditions for residence in France: genuine and serious study (attendance), relevance of the course and means of subsistence.

After a 1st year of residence in France with a VLS-TS "student" visa (long-stay visa constituting a residence permit for "students") the student is eligible for a multi-annual residence permit for the remainder of his/her studies.

The VLS-TS allows the holder to stay in France from four months to one year in order to complete his/her higher education.

Students who have not taken the necessary steps to renew their permit within the time limit run the risk of having their right to stay in the country removed.

The cases of students who are repeating a year or changing their course will be assessed on a case-by-case basis. They are not eligible for the multi-annual residency permit.

**The e-MERAUDE scheme** offers students telephone and e-mail support to help foreign students submit their applications on the prefecture website. A "Chat" facility is available on the ANEF.

A bilingual service (French/English) is also available.

**Please note: you must still go to the prefecture to obtain your residence permit or card and for the documents to be checked.**

The notification of the decision on the application for a permit does not constitute a residence permit. It is essential that students pick up their documents. Otherwise, at the time of renewal, the process will be blocked due to "non-issued permit".

In the event of technical problems during the procedure, in order to avoid being denied the right to stay, a "certificate of extension of education" is issued as proof of one's rights and which can be presented to the authorities.



Finally, foreign candidates who are preparing for Master's-level sandwich course are not required to prove that they have studied for one year in France and may work more than 964 hours/year as part of their studies (apprenticeship contract).

More information can be found on the official website of the French government

### Scholarships

Foreign students may receive scholarships from their government or from the French state depending on their status.

More information on Campus France's directory of scholarship programmes.

### Working in France during your studies

Applications for work permits for foreign students are registered on the ANEF. Foreign students with a residence permit may also work up to 60% of the annual working time, i.e., 924 hours. If the intended employment is connected to the study course that the student is on, the employer must apply for a work permit on the ANEF.

Reminder: Algerian students, who are covered by the 1968 bilateral agreement, can work up to 50% of the annual working time.

There are also several professional permits:

- **The Talent Passport** issued to a qualified employee (degree and salary level required) or to an employee of a company recognised as innovative by the State
- **The residence permit for salaried workers or temporary workers** allows access to employment for students who hold a qualification which is at least equivalent to a Master's degree and with a salary equal to or higher than 1.5 times the minimum wage.
- **The temporary residence permit** for job seekers or business start-ups. It is possible to get this permit one year after obtaining a vocational degree, a specialised Master's degree or another degree at least equivalent to a Master's degree. It can also be awarded to a former student up to 4 years after graduation if he/she has returned to his/her country of origin after completing his/her studies in France.

### Health insurance cover

**Registration with the Assurance Maladie (French Health Insurance system) is free and compulsory.** It allows you to get your health care costs paid for throughout your studies.

#### Step 1: the registration process

As soon as you arrive in France and have obtained your certificate of registration at a higher education establishment:

- **Register** on the dedicated Assurance Maladie website [etudiant-etranger.ameli.fr](http://etudiant-etranger.ameli.fr).
- **Enter the mandatory information.**
- **Submit the required supporting documents**, which differ according to your circumstances and country of origin.

Once you have completed these steps, **your personal space** will be ready. You will be able to access it from the email address that you gave when you registered. **To help you with your registration**, take a look at the tutorial in the "Need help" section.

#### Step 2: your health care procedures to get things right and be quickly reimbursed

- **Give the details of your GP** so that you can get better care and be properly reimbursed. He or she will provide you with the care you need and refer you to a specialist if necessary.

*The GP is a general practitioner who is your first point of contact in the health care system.*

- **Join a supplementary health insurance scheme** to top up your reimbursement from the Assurance Maladie. If you have

limited resources, the Assurance Maladie can help you with the Complémentaire santé solidaire (Collective supplementary health insurance).

- **Order your Carte Vitale (health insurance card) once you get the letter which you will receive once you have registered on the [etudiant-etranger.ameli.fr](https://www.etudiant-etranger.ameli.fr) website.** The Carte Vitale must be presented at all medical appointments. It contains all the information necessary to get your health care costs and those involved if you have to go to hospital reimbursed. It must be updated once a year and whenever there is a change in your circumstances on any of the terminals that you will find at the health insurance offices or in most chemists' shops (pharmacies).
- **Open your ameli account** on the ameli app (download from Google Play or App Store) or [ameli.fr](https://www.ameli.fr) to check on your reimbursements, update your personal information and access all online services.

If you are experiencing difficulty in registering with the Assurance Maladie, call **3646** (calls charged at local rates) **from Monday to Friday from 8:30 a.m. to 5:30 p.m.** It is possible if you ask to do so, to speak to an English-speaking adviser who will be able to make an appointment for you.

You can also subscribe to "[mes\\_tips\\_santé](https://www.instagram.com/mes_tips_santé)" on Instagram.

## The EHIC: European Health Insurance Card

Students who hold a European Health Insurance Card (EHIC) or a temporary certificate do not need to register with French social security. If they need medical care, they must contact the health insurance fund of their place of residence and send the following supporting documents:

- EHIC or provisional certificate
- Certificate of registration
- IBAN or RIB (Bank Details)
- Sworn statement stating that the student is financially supported by his/her parents

## Opening a bank account

Students staying in France for more than three months are advised to open a bank account. This will make the administrative procedures as well as daily life easier: paying bills (gas, electricity, rent), allow them to be reimbursed for their health costs, to start a mobile phone plan, get a public transport pass (Passe Navigo) and, more generally, cover daily expenses.

Several documents are required by the banks to open an account:

- Proof of identity
- Proof of address
- The certificate of registration or student card
- A residence permit

## Acc&ss network Paris Île-de-France and the Welcome Desk Paris

The acc&ss network can provide different types of assistance for students, PhD students and researchers from the Paris region, of all nationalities, with planning their stay and with settling in the Paris region: administrative procedures, assistance in finding accommodation, work regulations, job hunting, learning French, cultural activities, etc.

A multi-service and multilingual desk located at the CIUP has been created for you: the Paris Welcome Desk.

As well as allowing you to complete the formalities online, you will also find information about your stay in Paris and you'll be able to join a community of students who will be happy to share their international mobility experience. The "Welcome Desk Paris" is usually open from September to the end of October, but Acc&ss teams are available all year round. More information on the Welcome Desk Paris website

Contact :

**CIUP**  
17, boulevard Jourdan, 75014 Paris  
Accès : RER B « Cité Universitaire »



## LIVING IN PARIS

### LEARNING FRENCH

#### French as a Foreign Language (FLE) centres

Paris-Panthéon-Assas University offers French as a Foreign Language (FLE) courses to international students who are on exchange programmes, LLM and DSU.

Many language schools, Alliances françaises and universities also offer courses and services to suit all learning styles for foreign students who wish to improve their command of the French language.

The FLE Central Directory allows you to find out which centres in France have the «FLE quality certification».

### ACCOMMODATION

#### «Finding accommodation in Paris» guide

Detailed information on accommodation can be found in the accommodation guide which is on the page: <https://www.u-paris2.fr/fr/ac-cueil-des-etudiants-internationaux>

Useful details:

- **The CROUS** (Centre régional des oeuvres universitaires et scolaires - Regional Centre for university and Student Affairs) for university residences: [www.crous-paris.fr/logement](http://www.crous-paris.fr/logement) and student accommodation in private homes: [www.lokaviz.fr](http://www.lokaviz.fr)
- **CIUP**: Cité internationale universitaire de Paris / Paris International University Campus
- **The “garantie visale”** which is a comprehensive guarantee fully funded by the State and a rental deposit solution for students under the age of 30.
- **The CAF** (Family Allowance Fund) for personalised accommodation benefits (APL)



## PUBLIC TRANSPORT

Paris and the Paris region have an extensive public transport network: metro, bus, RER (suburban express train), tramway, "transilien" (commuter rail network).

On weekdays, the metro and RER operate from 5:30 a.m. to around 1:15 a.m. and up to 2:15 a.m. on Saturdays, Sundays and on the eve of public holidays.

To get around and visit Paris and the Paris region easily:

- The RATP website: <https://www.ratp.fr/>
- The application: <https://www.ratp.fr/apps/bonjour-ratp> (timetables, routes, fares, pay plans, "Vélib" cycle-rental access, etc.)
- The application: <https://www.ratp.fr/apps/next-stop-paris> is free and available in 10 languages.

Useful details:

- **The Imagine R Student pass (only for students under 26 years old)** allows unlimited travel in the Paris Region for 373 euros per year: <https://www.ratp.fr/titres-et-tarifs/forfait-imagine-r>
- **The Navigo monthly (€84.10) or weekly (€30) pass** allows unlimited travel in the Paris region: <https://www.ratp.fr/titres-et-tarifs/forfaits-navigo-mois-et-semaine>

There are many different fare options depending on whether you are a student, occasional user, regular user, etc. For more information, visit the RATP website.

## VÉLIB'MÉTROPOLE

Vélib'Metropole is a shared cycle rental service available at 1 400 pick-up points in Paris and the Paris region and provides 20 000 bicycles in the classic version (green Vélib) or electric powered version (blue Vélib). To find out about the different price plans, just visit the **Vélib' Métropole** website, section «choose a payment plan»: <https://www.velib-metropole.fr/offers>

## CULTURAL SCENE

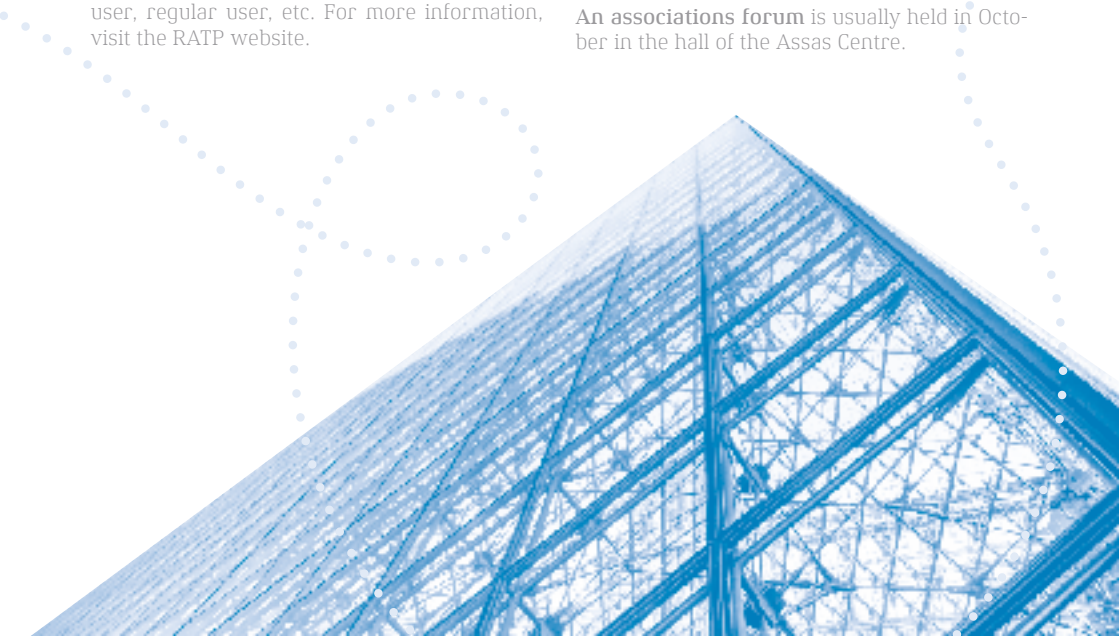
Paris has a tremendous amount to offer in terms of culture: museums, theatres, cinemas, concerts, operas, ballets.

Paris and its region offer many cultural events and the City of Paris regularly lays on free events.

The Cité internationale universitaire de Paris (CIUP), through its Acc&ss network Paris Île-de-France, offers a wide selection of cultural activities which are reserved and/or designed for international students: <https://www.ciup.fr/> and <https://access.ciup.fr/>

The Student Life service of Paris-Panthéon-Assas University is available to students who are interested in creating associative projects and/or organising events: [vie.associative@u-paris2.fr](mailto:vie.associative@u-paris2.fr)

An **associations forum** is usually held in October in the hall of the Assas Centre.





## CAMPUS LIFE

Facilities and services for students for a unique experience in the heart of Paris!

To cater for the needs of students, the university offers multiple digital services, tutorials and an extensive library database. The university does its very best to assist international students by offering special courses and professional support services, as well as offices dedicated to exchange programmes, double degrees and applicants to individual international mobility programmes. Various extra-curricular sports and cultural activities are also available. These are all designed to help to make each student's experience of university as fulfilling and enjoyable as possible.

## STUDENT CARD

The student card of Paris-Panthéon-Assas University is a multi-service card that allows you to:

- Prove that you are a registered student.
- Pay for your meals in the CROUS restaurants and cafeterias.
- Pay for print-offs and photocopies in Paris-Panthéon-Assas University libraries.
- Book work rooms at the Assas Centre.
- Use the gym at the Assas Centre.
- Borrow laptops and tablets from the library.
- You will be asked to show your student card to access the buildings of Paris-Panthéon-Assas University and during the examination sessions.

## DIGITAL SERVICES

### The e-mail address and the Digital Working Environment (DWE)

Once you have registered at the university, you will have to activate your e-mail address by logging in to the Environnement numérique de travail (Digital Work Environment) (ENT) at <https://ent.u-paris2.fr>.

It is essential that you use your student email facility.

With your email address ([firstname.surname@etudiants.u-paris2.fr](mailto:firstname.surname@etudiants.u-paris2.fr)), you will be able to access news, events and information from the university, online tutorials, as well as some of your courses which are in video form, but also Agor@ssas, job offers, internships via Réseau pro, the library's digital resources: books, journals, catalogues, collections.

The university offers three kinds of Wi-Fi access:

- **Wifi\_Paris2** on the university premises
- **Eduspot** for the whole of France
- **Eduroam** worldwide.

These three networks are accessible by using your ENT logins.

Which means: you can configure your personal email settings so that you can forward your emails from Paris-Panthéon-Assas University mailbox to it.

If you experience any log-in problems, please send an email to [support-ent@u-paris2.fr](mailto:support-ent@u-paris2.fr)

## DINING FACILITIES

The CROUS operates a large number of university restaurants in Paris. The meals are well-balanced, low-cost and you can eat close to or within the study premises.

The Paris CROUS has 18 restaurants, 36 cafeterias and 4 food-trucks.

The dining facilities are open from Monday to Friday. Some of them are also open for you in the evening and/or at weekends. You can find the list of restaurants on the CROUS website in the "Where to eat" section and on the "Crous Mobile" app where you can check the opening

hours and addresses.

The various centres of Paris-Panthéon-Assas University also offer dining services for students.

At Assas Centre:

- Le Cujas: fast food (coffee, pastries) from 8:30 a.m. to 5:45 p.m.
- Le Portalis: light food (sandwiches, ready meals) from 9:30 a.m. to 8 p.m. from Monday to Friday and from 9 a.m. to 3 p.m. on Saturdays.
- Le Bodin: salad bar (balanced quick-eat salads and pasta meal plans) from 11:30 a.m. to 2:30 p.m.

At Pantheon Centre: cafeteria

At Vaugirard centre: cafeteria

At Melun centre: university restaurant of the Melun centre, Fréteau de Saint-Just building - ground floor, rue du Port in Melun (77).

Payment for services in the Paris CROUS university restaurants and cafeterias is made through **Izly**.

The student card of Paris-Panthéon-Assas University has a chip in it that allows it to be used as a means of payment (see Student card).

More information can be found on the **Izly** website.

## UNIVERSITY LIBRARY

The university library is spread over three sites: Assas, Panthéon and Melun and provides access to a network of specialised libraries. Paris-Panthéon-Assas University has over 30 libraries and 24 research centres.

The Assas University Library offers students the most modern working environment in France. It offers numerous documentary resources (books, journals, articles, annals, theses) listed in databases that can be consulted via the ENT.

### Borrowing

- 5 items for 14 days by using the automatic loan machines or by asking the library staff
- Returns are made to the library staff and to the «book box».
- Laptops, tablets and USB sticks by the day

## Photocopying, etc.

Photocopies, scans and prints can be made using the ENT and from the static workstations (payment by Cartadis card and by Izly)

## Help with documentary research

Librarians and document tutors are on hand to help you.

Online tutorials are also available on the library's website.

## Wheelchair access

The various centres are approved for use by people who have disabilities: work in conjunction with the university's disability department.

In addition to the physical library resources, the university provides students with access to a very wide range of digital resources and offers online access to over 35 000 books in electronic format, millions of journals and articles published by leading academics. Students can access these resources at any time from anywhere.

More information is available on the website of the University Library of Paris-Panthéon-Assas. **Contact:** [bu@u-paris2.fr](mailto:bu@u-paris2.fr)

## JOB GUIDANCE SERVICE (CIO-BAIP)

The Information and Guidance Centre (CIO) offers support and advice throughout the time students are studying and most students will find it useful.

The Bureau d'aide à l'insertion professionnelle - Career Support Office (BAIP) provides students with information on internships and jobs relating to the courses offered by the university.

Internships can increase your chances of finding a job after graduation. The university's professional Masters' programmes and the Job Guidance Service (Mission orientation-emploi) actively help students find an internship and help them prepare for starting their working life.

A **Job Fair** is organised every year by the university. It is an opportunity to meet French, European and international companies as well as law firms.

Contacts and information on the **Job Guidance Service (Mission orientation-emploi)** portal

## STUDENT ASSOCIATIONS

Paris-Panthéon-Assas University is home to a particularly large number of associations.

To find out which associations have been set up by students at the university, please take a look at the list available on the website.

Video walls located near the food counter (le Bodin) in the Assas centre are specially dedicated to news about the university's association scene.

In addition, the ESN association provides assistance in welcoming international students and raising awareness among young people about the opportunities and advantages of international mobility programmes.

For more information, please contact the local ESN Paris office

Finally, the university's Job Guidance Service (Mission orientation-emploi) can put you in touch with the University of Paris-Panthéon-Assas graduates Alumni network.

## SPORT

The sports department provides a choice from more than 70 sports such as rugby, handball, golf, karate, boxing, fencing or rowing, which are supervised by physical education and sports teachers.

Some of our teams take part in regional and national university championships at a high level: with a number of our students going on to represent France in certain competitions.

There are three levels available: beginners, proficient and competition.

All international students can take part in sport.

The annual registration fee is 35 euros for all students except for Erasmus students, for whom registration is free.

Sport is not compulsory, but it is one of the options offered to international students who can enrol as part of their course.



The sport option allows you to obtain bonus points that are counted in the results' average (except for Erasmus, DU or DSU students).

More information is available on the website of the university's sports association.  
Download the application: sportunivparis2

## HEALTH AND WELL-BEING

The nurse, the Health and Disability Centre and the Student health service (SSE) welcome you to the Assas centre, 92 rue d'Assas, 75006 Paris.

For further information:  
<https://www.u-paris2.fr/fr/campus/sante>

## DISABILITY

The Health and Disability Centre welcomes and assists students with physical or psychological disabilities, and those who have specific learning difficulties or long-term health problems.

In particular, it allows special arrangements to be made for students for lessons and/or exams (note-taking, extra time, etc.) in line with a procedure which is explained on the Health and Disability Centre page of the university website.

## #RÉAGIRASSAS



Paris-Panthéon-Assas University has set up a rights commission to protect all members of the university community against all forms of violence and attacks on personal dignity: including sexism, harassment and discrimination.

Any member of the university community can report an issue via the link available on the de-

icated #RéagirAssas (Assas Protects you) page.

## ASSAS ENVIRONMENT

As part of its environmentally responsible approach, Paris-Panthéon-Assas University applies best practices on its campuses to promote sustainable development through Assas Environnement

In December 2022, Paris-Panthéon-Assas University made it into the GreenMetrics global ranking of universities based on their environmental performance.

Along with #RéagirAssas, Assas Environnement is just one of the commitments made by Paris Panthéon-Assas University.



## ADDRESSES OF THE CENTRES

### Pantheon Centre

Chair – Vice Chancellory in charge of International Relations – International Relations Department – Master 2 Law School – Thesis Services

12, Place du Panthéon 75005 Paris

Metro station: Cluny La Sorbonne or Maubert-Mutualité (line 10) or RER B station Luxembourg

### Assas Centre

Bachelor's (2nd and 3rd year) and Master's courses – Library – Restaurants – Language centre – Welcome desk – Student life – Sickbay – Social service – Disability Network – Job Guidance Service – Sports Department – IFP (Information and Communication Sciences Department)

92, rue d'Assas, 75006 Paris

Metro station: Notre-Dame des Champs (line 12) or RER B station Port-Royal

### Vaugirard Centre 1

Scolarité Licence 1 (University Degree 1) – Service des enseignements (Teaching Department) Bachelor's Degree 1st year (L1) – Library

391, rue de Vaugirard, 75015 Paris

Metro station: Convention (line 12)

### Guy de la Brosse Centre

Management Sciences Centre

1, rue Guy de la Brosse, 75005 Paris

Metro station: Jussieu (line 10 and line 7)

### Melun Centre

Bachelor 1, Bachelor 2, Bachelor 3 - Library

19, rue du Château, 77000 Melun,

RER D, Melun station



## YOUR CONTACTS

### INTERNATIONAL RELATIONS DEPARTMENT

ASSAS CENTRE

#### Welcome desk

Office 311, 3<sup>rd</sup> floor

Christel VALLANTIN

Tél : +33 (0)1 44 41 59 62

[christel.vallantin@u-paris2.fr](mailto:christel.vallantin@u-paris2.fr)

### International degrees and campuses unit

LL.B and LL.M. Degrees, Diplômes Supérieurs d'Université,

National degrees based abroad

Nathalie OLIVIER

Unit director - Office 710

Tél : +33 (0)1 44 41 55 35

[nathalie.olivier@u-paris2.fr](mailto:nathalie.olivier@u-paris2.fr)

Thaïs KJELLBERG

DSU, Singapore and Mauritius Campus administrative assistant  
Office 706

Tél : +33 (0)1 44 41 55 33

[thais.kjellberg@u-paris2.fr](mailto:thais.kjellberg@u-paris2.fr)

Virginie SEBILLE

DSU, Singapore and Mauritius Campus administrative assistant  
Office 706

Tél : +33 (0)1 44 41 55 31

[virginie.sebille@u-paris2.fr](mailto:virginie.sebille@u-paris2.fr)

Wafa RAJI

Dubai Campus and LL.M. International Business Law - Paris  
administrative assistant - Office 703

Tél : +33 (0)1 44 41 59 87

[wafa.raji@u-paris2.fr](mailto:wafa.raji@u-paris2.fr)

Valérie Clergue

Recruitment team and national degrees based abroad  
administrative assistant

Tél : +33 (0)1 44 41 87 25

[valerie.clergue@u-paris2.fr](mailto:valerie.clergue@u-paris2.fr)



## CHECK LIST

### Before arriving in France

- Check that your passport or national identity card is valid
- Check to see if you need a visa
- Book your flight ticket
- Look for accommodation
- Apply for a rental deposit at [www.visale.fr](http://www.visale.fr)

### When you arrive in Paris

- Register with the university to obtain the certificate of registration
- Finalise the application on the [visale.fr](http://www.visale.fr) website by uploading the certificate of registration for the accommodation deposit
- Open a bank account
- Take out home and third-party insurance
- Join the French general social security scheme
- Apply for a public transport pass: ImagineR or Navigo pass
- Join in on the university's Freshers events

### While you are studying in France

- Find out about the university's student associations
- Activate your Izly account on the student card (payment of meals and copying facilities)
- Contact the embassy of your country and subscribe to the newsletter
- Renew your residence permit between four months and two months before it expires

## USEFUL INFORMATION

### Web sites

Paris-Panthéon-Assas University: <https://www.u-paris2.fr/fr> Paris

International University Campus: <https://www.ciup.fr/Campus>

France: <https://www.campusfrance.org/fr>

The CROUS of Paris: <https://www.crous-paris.fr/>

### Emergency numbers

The emergency numbers provide free access to help 24 hours a day.

In any case, to speed up and make it easier for your call to be processed, please give the answers to the following 3 questions:

1. My name? If you are a victim, a witness...Give a telephone number on which you can be contacted
2. My location? Give the precise address of the place where you need the emergency services to help.
3. The purpose of my call?

European emergency number: 112

If you are the victim or witness of an accident in an EU country  
Number which can be reached from a landline or mobile phone

EMS: 15

The emergency medical service

To obtain help from a medical team in cases of extreme distress, as well as to be redirected to a full-time care centre.

Police Rescue: 17

To report an offence that requires immediate action from the police

Fire brigade: 18

To report a situation involving danger or an accident involving property or people and to obtain immediate assistance.

Emergency number for the deaf and hard of hearing: 114

Number accessible by fax and SMS



PANTHÉON-ASSAS  
UNIVERSITÉ  
PARIS

12 place du Panthéon 75005 Paris  
[www.u-paris2.fr](http://www.u-paris2.fr)